



Product Fact Sheet

Macaroon
Christian Troels

lucie kaas

COLLECTION
Macaroon

Inspired by the French delicacy, “le macaron”, the Macaroon lamp series gives rooms an elegant and simple touch by balancing opal glass, a brass ring and ceramic. Created by industrial designer Christian Troels.

VARIATIONS & DIMENSIONS



Table Lamp



Small Pendant



Large Pendant

Heigh:
Diameter:
Chord:

12.5 cm / 5"
18 cm / 7"
250 cm / 98.5"

16,5 cm / 6.5"
300 cm / 118"

26 cm / 10.2"
300 cm / 118"

SPECIFICATIONS

Designer

Christian Troels

Country of origin

China

Year of Design

2016

Environment

Indoor

Material

Shade: Opal Frosted Glass

Base: Ceramics

Middle: Metal

Chord: Fabric

Bottom: Felt

Color specification

Shade: White

Base: Nude / Light Grey / Black

Chord: Black

Bulb included

No

Dimmable

Table lamp: Yes











Care & Cleaning

Clean with a soft dry cloth. Always switch off the electricity supply before cleaning

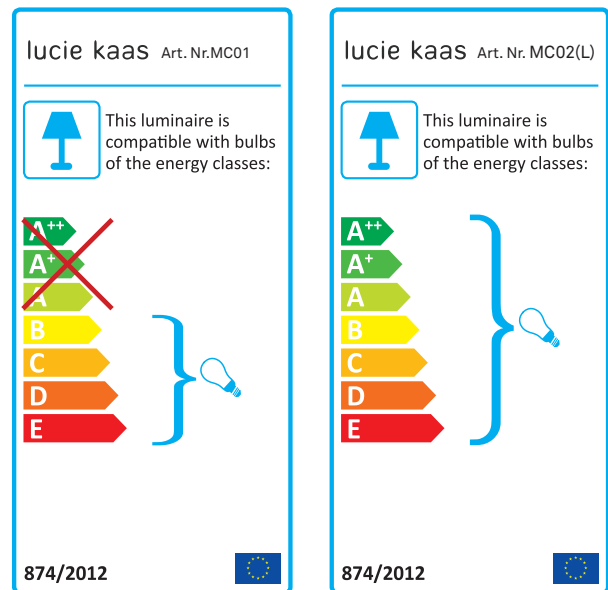
Assembly Instruction

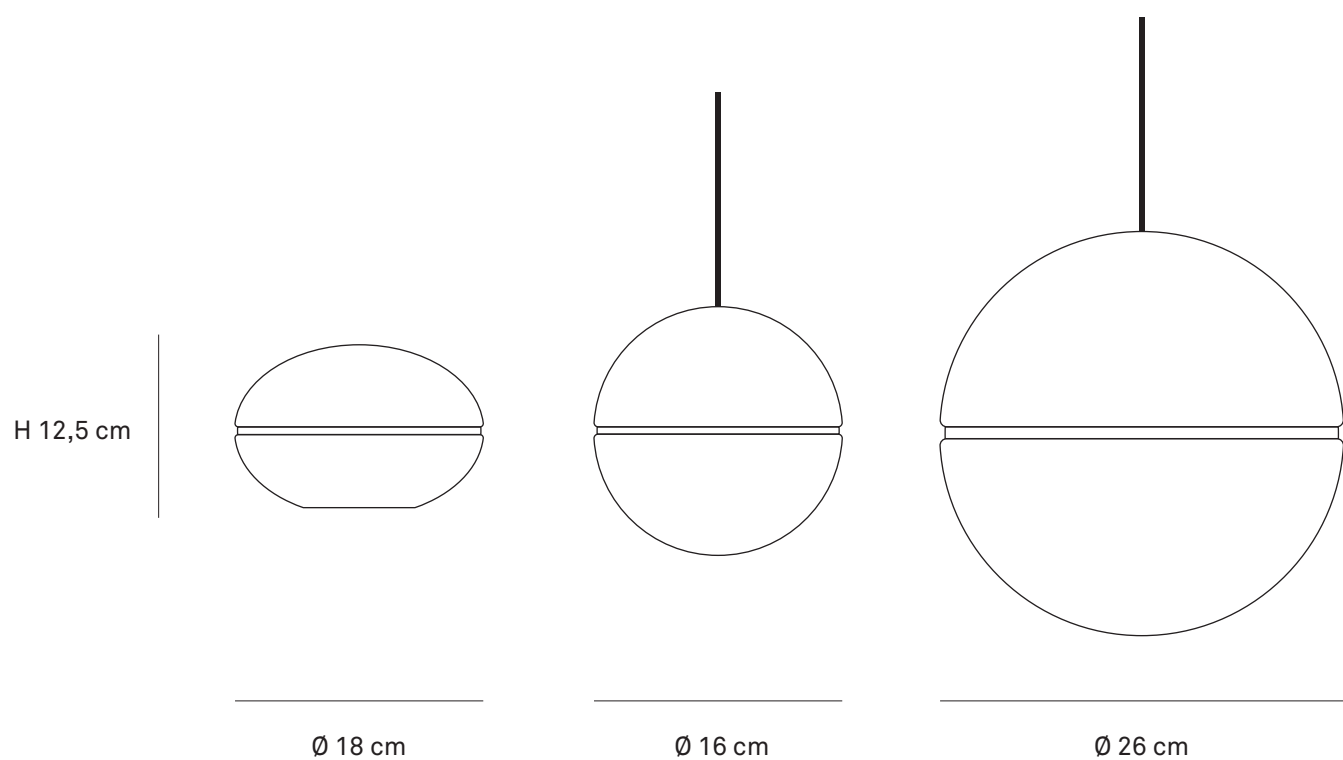
Assembly manual is included with every lamp. Note that EU and US versions assembly instructions are different.

RATING & SPECIFICATION

	Table Lamp		Pendant Lamp	
	EU	UL	EU	UL
Socket:	G9	G9	Ø 26: E27 Ø 16,5: E14	Ø 26: E26 Ø 16,5: E12
Light Source:	MAX 42W	MAX 42W	MAX 40 W	MAX 40 W
Voltage:	230	110-120	220-240	120
Frequency:	50 Hz	60Hz	50-60Hz	60Hz
IP Rating:	IP20		IP20	
Classification:	Class II	Class II	Class I	Class I
Energy Efficiency:	Compatible with bulbs: B - E		Compatible with bulbs: A++ - E	
Certification:	    		    	

ENERGY LABEL





DIMENSION

—
Macaroon
Christian Troels

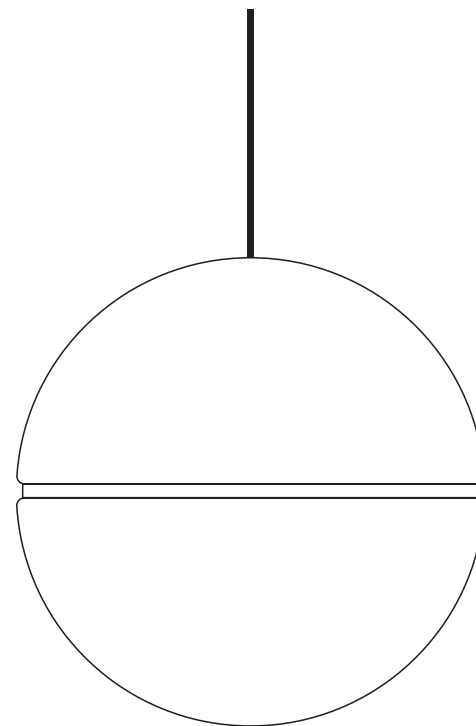
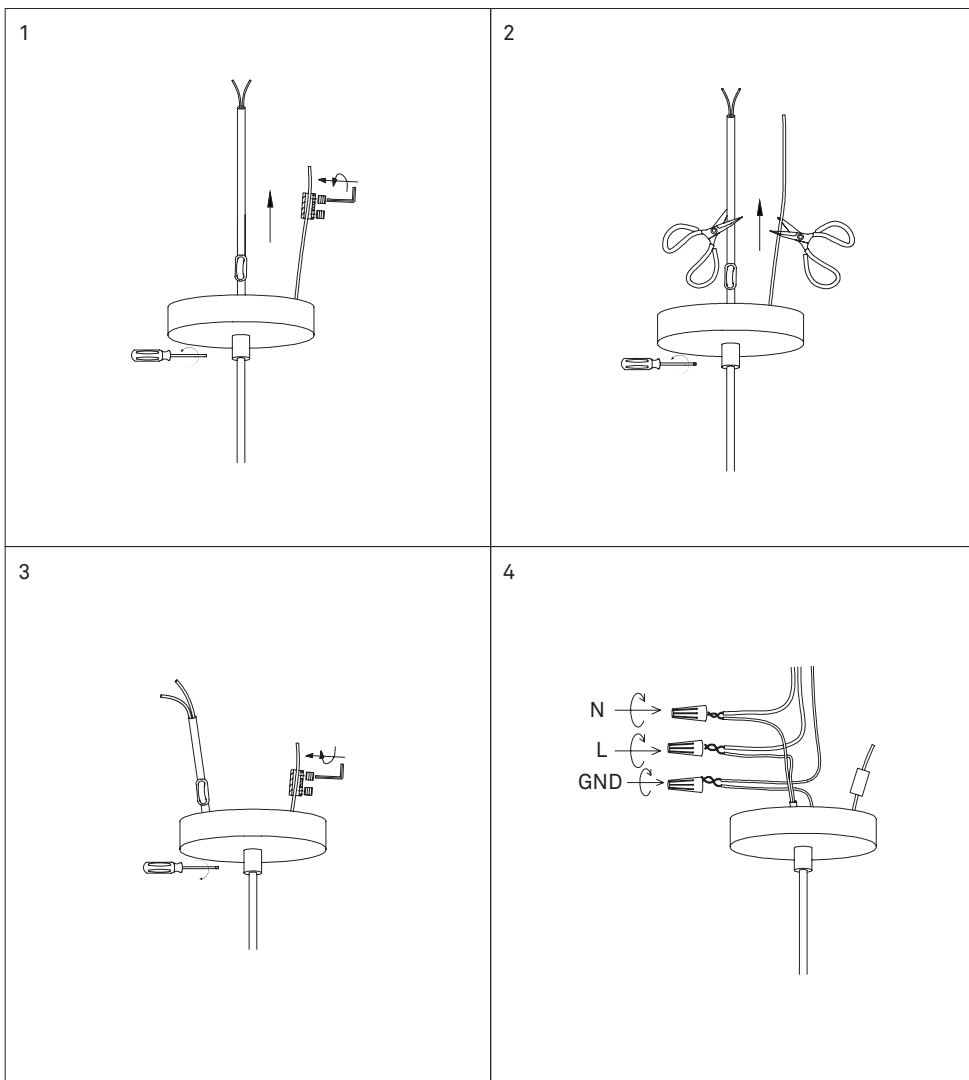
lucie kaas

IF NEED SHORTEN THE CORD,
PLEASE FOLLOW THIS STEP

Assembly Instruction

Macaroon

Pendant Lamp



HARDWARE IDENTIFICATION



BEFORE ASSEMBLY

- 1 Read through the instructions carefully before starting assembly.
- 2 Check the contents of the package (contact the point of sale if you find anything defective or missing).
- 3 Make sure that the indicated tools are available.
- 4 All lights must be wired according to Local and National electrical codes.
- 5 To be installed by a professional electrician.
- 6 Assemble step by step as shown in the instructions.
- 7 It is a good idea to use a soft, protective underlay during assembly.

CAUTION

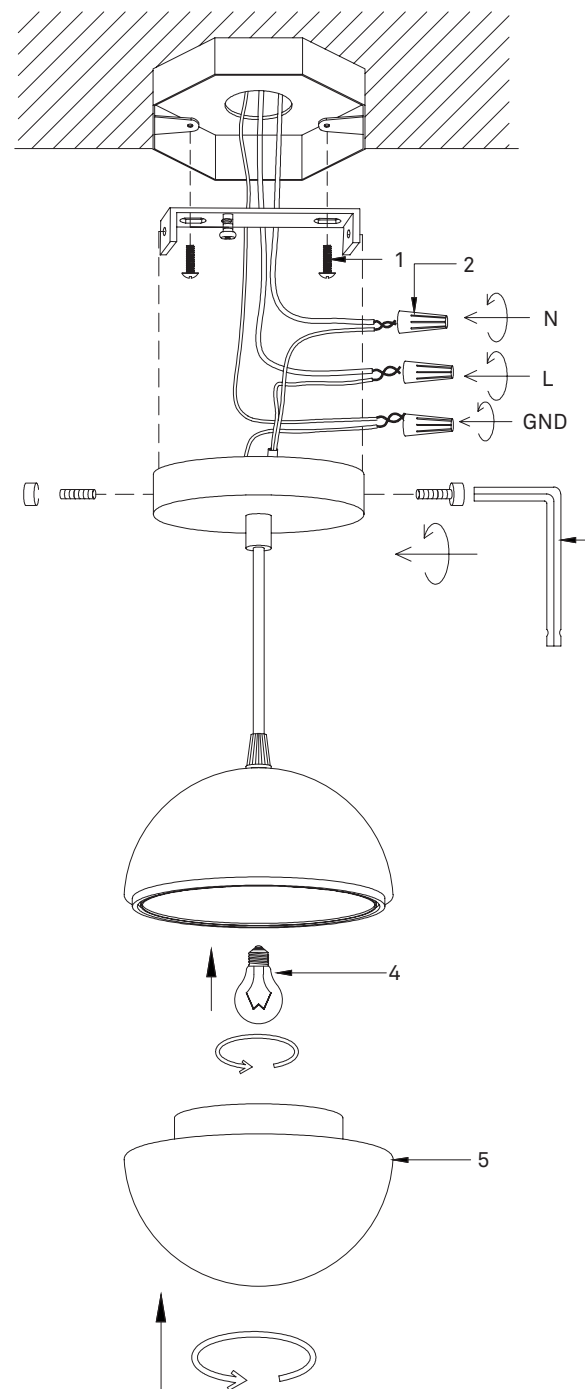
All electrical components are CUL approved with this fixture

To reduce the risk of fire, use
max 40 watt E26
120V 60HZ AC Only

SOME USEFUL ADVISE

- All lights must be wired according to Local and National electrical codes.
- To be installed by a professional electrician.
- You should check and re-tighten the screws and bolts a few weeks after assembly.
- For cleaning, use mild soapy water only and dry with a soft cloth (other cleaning agents may cause damage not covered by warranty.)

Please keep this assembly instruction in a safe place for future reference.

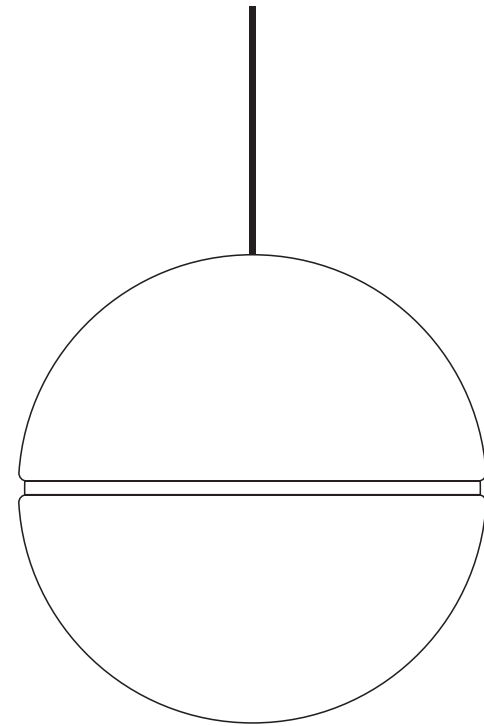


120V 60Hz
E26 TYPE A Max 40W

Bulb not included

Macaroon

Pendant Lamp



HARDWARE IDENTIFICATION



BEFORE ASSEMBLY

- 1 Read through the instructions carefully before starting assembly.
- 2 Check the contents of the package (contact the point of sale if you find anything defective or missing).
- 3 Make sure that the indicated tools are available.
- 4 All lights must be wired according to Local and National electrical codes.
- 5 To be installed by a professional electrician.
- 6 Assemble step by step as shown in the instructions.
- 7 It is a good idea to use a soft, protective underlay during assembly.

CAUTION

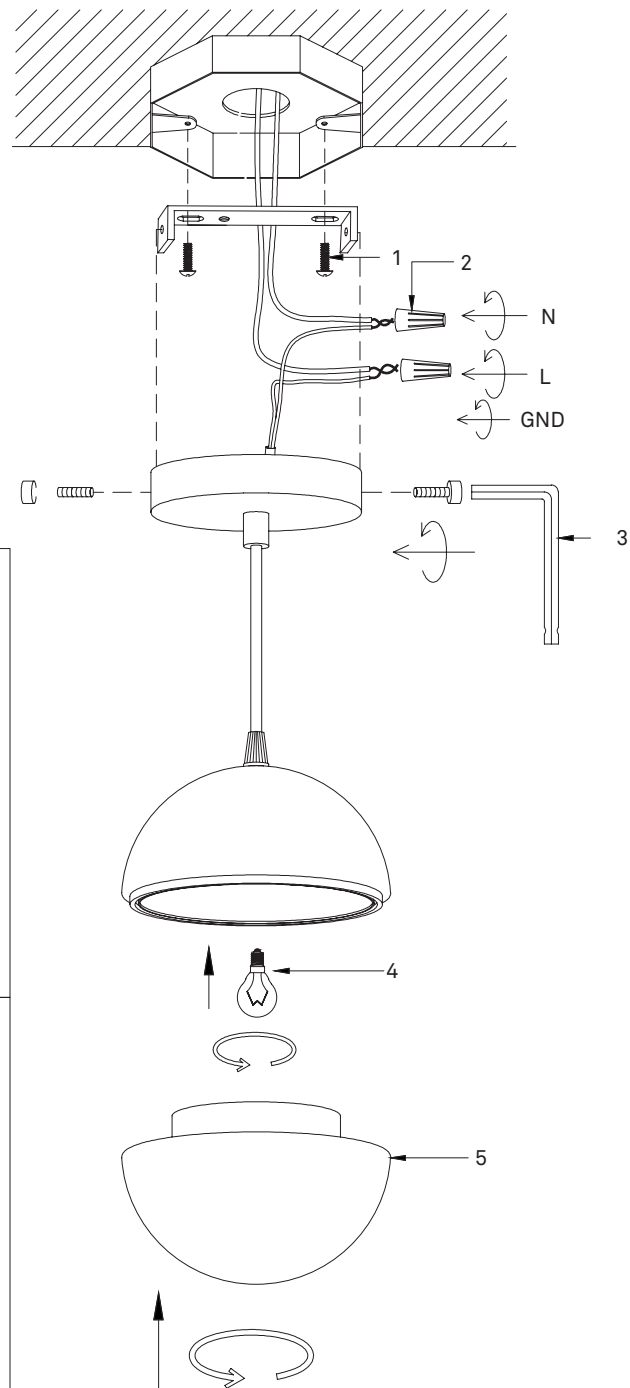
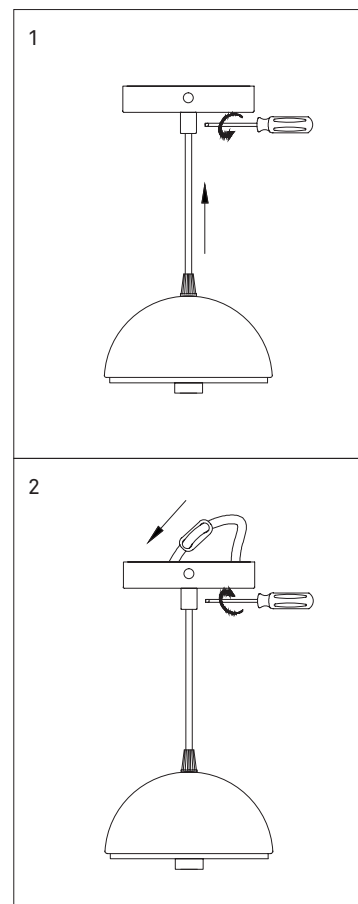
All electrical components are CUL approved with this fixture

To reduce the risk of fire, use
max 40 watt E12
120V 60HZ AC Only

SOME USEFUL ADVISE

- All lights must be wired according to Local and National electrical codes.
- To be installed by a professional electrician.
- You should check and re-tighten the screws and bolts a few weeks after assembly.
- For cleaning, use mild soapy water only and dry with a soft cloth (other cleaning agents may cause damage not covered by warranty.)

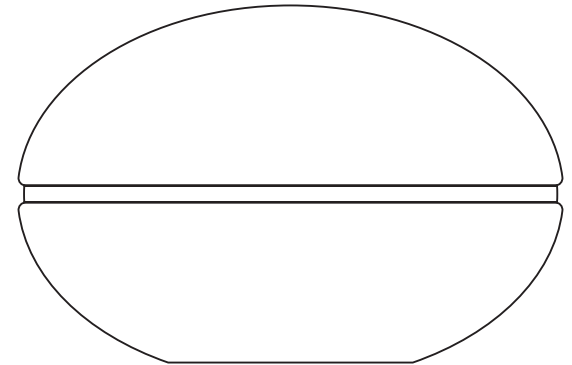
Please keep this assembly instruction in a safe place for future reference.



Bulb not included

Macaroon

Table Lamp



BEFORE ASSEMBLY

- 1 Read through the instructions carefully before starting assembly.
- 2 Check the contents of the package
(contact the point of sale if you find anything defective or missing).
- 3 Make sure that the indicated tools are available.
- 4 All lights must be wired according to Local and National electrical codes.
- 5 To be installed by a professional electrician.
- 6 Assemble step by step as shown in the instructions.
- 7 It is a good idea to use a soft, protective underlay during assembly.

CAUTION

All electrical components are CUL approved with this fixture

To reduce the risk of fire, use
max 42 watt G9
110-120V, 60HZ

SOME USEFUL ADVISE

- All lights must be wired according to Local and National electrical codes.
- To be installed by a professional electrician.
- You should check and re-tighten the screws and bolts a few weeks after assembly.
- For cleaning, use mild soapy water only and dry with a soft cloth
(other cleaning agents may cause damage not covered by warranty.)

Please keep this assembly instruction in a safe place for future reference.

